



Spring 2011

POULTRY SCIENCE ASSOCIATION

Hatchery NEWSLETTER

Inside this Issue

- A Food Safety Overview, 2
- Happenings at Virginia Tech, 2
- A View from the Top, 3
- Looking into the future of PSA, 3
- 2011-16 PSA Strategic Plan, 4
- New PSA Foundation Initiatives, 5
- Hatchery by the Numbers, 5
- Facebook Requests, 6
- Meet Your Reps, 6
- PSA Student Luncheon, 7



2010
PSA/WPSA
Student Mixer

Blake Street Pub
Denver, CO

From Our Table to Your Fork!

First off, James and I would like to thank PSA for sponsoring our luncheon and WPSA and PSA for sponsoring our student mixer. A big thanks goes out to Rob as well for being an excellent leader and mentor the past two years. A lot has been happening within the Hatchery this year! We had an excellent turnout at the student luncheon at PSA in Denver where we elected James Tyus as the incoming representative to the board. We also discussed interest in forming our own PSA Hatchery board to assist in the planning of events, newsletters and such. The mixer was held at the Blake Street Pub, where we got a history lesson on a ghost that haunts the establishment, very spooky!

Rob and I had a busy year preparing for the PSA meeting, which

included assisting the strategic planning committee with the new plan for the next 5 and 10 years. We also had several conference calls regarding the hatchery portion of the website. I think everyone will find it easier to use, especially since we have negated the need to sign in to the hatchery portion itself. I would also like to express that if anyone is on Facebook, that the PSA Hatchery has its own page and this is your invitation to join! There we will post information on our events and social activities. If you are not a member of the Facebook community I highly recommend you join! I hope everyone has a productive year and we look forward to seeing you at the next PSA meeting, be sure and look for our newsletters before then!



James Tyus and Jessica Butler,
your PSA student representatives

A Food Safety Overview -Gretchen Nagel, Auburn Univ

Consumers have a right and the expectation to obtain wholesome food products. Government regulatory agencies like the United States Department of Agriculture and the Food and Drug Administration provide guidance to the food industry to comply with food safety standards and legislation. Currently, new initiatives are being enacted as regulations are becoming more stringent in effort to reduce the number of food-borne associated illnesses. According to the Centers for Disease Control and Prevention, it is estimated that food-borne diseases causes approximately 76 million illnesses, 325,000 hospitalizations, and 5,000 deaths in the United States each year. The likelihood of product recall, liability, and loss of business as well as consumer confidence are also of concern.

Regulatory agencies and universities conduct extensive research, instruction, and outreach to enhance production of wholesome foods. For example, the Auburn University Department of Poultry Science supports the Poultry Products Safety and Quality (PPSQ) program.

Since a significant percentage of reported food-borne illness is attributed to poultry products, it is necessary to improve food safety research efforts to identify hazards and develop strategies to control the risks associated with them. The PPSQ program provides a multi-disciplinary approach to developing the skills and technology required to produce wholesome, high quality poultry products from farm-to-fork.

While the food industry takes steps to ensure compliance with food safety standards, it is critical that consumers be informed on ways to handle and prepare food safely. The Food Safety Inspection Service, a branch of the USDA, makes recommendations on how to keep food safe. These include washing hands and surfaces often, avoiding cross-contamination by separating raw meat, poultry, and seafood, cooking to proper temperatures, and refrigerating food properly. By following these guidelines, public health and well-being can be greatly improved by decreasing the risk of contracting food-borne illness.



Happenings at Virginia Tech -Diego Paiva, Virginia Tech

My name is Diego Paiva, and I am originally from Brazil. I came to the USA to get my Masters at Auburn University, and I am currently working on my PhD at Virginia Tech with Dr. Audrey McElroy. Our lab is involved in the development and applications of research to improve poultry performance and address concerns of the broiler and turkey industries. The laboratory's primary research program involves the investigation of intestinal mechanisms of immunity

to pathogens. Of particular interest is how these mechanisms can be modulated by embryonic incubation conditions, vaccine administration, or dietary inclusions to maintain intestinal integrity during disease challenges. Research with commercial broiler and turkey dietary programs and inclusion of enzymes, probiotics, or prebiotics during intestinal challenges has yielded several promising approaches to support intestinal integrity. My research specifically

involves the supplementation of turkey diets with feed additives that will modulate the immune response induced by pathogens. I love my research, and my desire as a Ph.D. student is to contribute to the efficiency of poultry production and benefit the commercial industry and growers. I grew up on a farm, therefore I am aware of the impacts (especially economic) that dietary manipulation has in a production system.

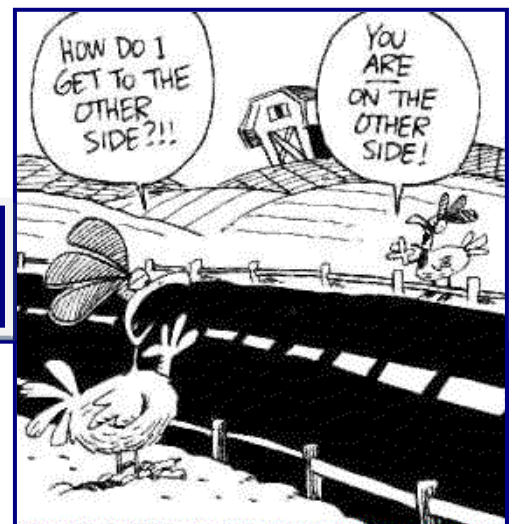
A View from the Top – A recent graduate discusses her first job Dr. Ashley Shaw, FDA Center for Veterinary Medicine

In an effort to keep America's food and drug supplies safe, FDA's Center for Veterinary Medicine (CVM) helps to regulate the manufacture and distribution of feed additives and drugs that will be given to animals (both production and companion). Any company looking to manufacture a feed additive or drug must go through a rigorous process to ensure that the product is safe and effective for its intended use. Typically, the company completes a number of studies to provide evidence that the product is safe and effective. This evidence is compiled and sent to CVM for review, where a team of animal scientists and/or veterinarians, statisticians, chemists, and other scientists determine if the product's health benefits outweigh any known risks.

In my recently acquired position, I serve as a reviewer for the division of production drugs. This division is split into two groups: 1) Ruminant Drugs and 2) Swine and Poultry Drugs. As the lone poultry scientist, I serve as one of the main reviewers for drugs targeted in poultry. I have also become one of the key go-to people for anyone within the center that may have questions about chickens or turkeys.

I learned about this position via <http://usajobs.gov/>, where I applied and was offered an interview in July of 2010. I received an unofficial offer for the position only 3 days after my interview (luckily, I was the last of a group of people to be interviewed, so I didn't have long to wait for a decision). With graduation just days away, I was ecstatic to have found a job that I'd be able to jump into. Little did I know I'd be waiting a grueling 3 months while the government completed all of their processes, produced an official offer, and provided me with a start date.

Despite the delayed start date, I must say I love my job. In the months that I've been here, I've enjoyed learning about the regulatory processes required to get a product on the market and reviewing research (that I don't have to complete!) for potential products. It's nice to evaluate things from a different perspective. Having a position with a bit of job security doesn't hurt either!



Looking into the Future of PSA Jessica Butler, Chair, PSA Hatchery Committee

This past year I had the opportunity to serve on the strategic planning committee for PSA. I can honestly say that I was expecting grueling work days with little to no fun, but what I encountered in Illinois was completely different. Watching everyone working together, throwing out new and inventive ideas, and formulating plans to accomplish them were truly inspiring. One idea in particular took my interest, that of recruiting. Usually we look for students or potential members in or closely related to our field; poultry, but that's just one slice of the cake. We can venture out even further! I for instance am a proud member of PSA but also of the International Association for Food Protection because my line of research crosses into both fields. I can't possibly be the only one! We as students should be striving to prepare PSA for the future, and a big part of that is keeping our member numbers up. With the perk of allowing first year students free membership and subsequent years as students at a low rate of \$30 in addition to online access to our journals, there's no reason we shouldn't have people standing in line to join! Furthermore, not having poultry science as a major part of an University's agriculture program, doesn't mean they don't have researchers (with graduate students) participating in poultry related research, look around at your university and surrounding universities for these people, they'll be twice as likely to join us if they know one of us. Increasing our member numbers and the number of universities involved in PSA will only help us to smoothly transition into the future.

The 2011-2016 PSA Strategic Plan

The Poultry Science Association successfully concluded its first five-year strategic plan in 2010. Leveraging the accomplishments and employing its new capacity, PSA has created its second ambitious strategic plan to further develop the Association and help meet future challenges and opportunities in poultry science and the larger poultry enterprise. The plan outlines seven distinct outcome goals, each with a number of objectives and activities designed to accomplish these goals. While each PSA Hatchery member is encouraged to review the full 2011-2016 PSA Strategic Plan (available on the PSA website), the following goal (#6) and two of its objectives (R & S) are provided for your convenience:

Outcome Goal #6: PSA's retains its members over the course of their careers and wisely invests in their leadership and professional skills and abilities.

Objective R: Create a support and professional development initiative for early career members and provide a seamless transition for Hatchery members. Activities may include:

- ◇ Develop a symposium and/or series of webinars directed toward early career success.
- ◇ Create a mentoring program for early career professionals who demonstrate PSA leadership qualities. Pair early career professionals with long-time PSA leaders for on-going communication, support and mentoring.
- ◇ Increase participation of early career professionals in committee work.
- ◇ Invite and encourage early career professionals to volunteer as peer reviewers.
- ◇ Increase the number of nominations for the PSA Early Achievement Awards.
- ◇ Utilize early career professionals as speakers for PSA Hatchery programs.
- ◇ Establish a community of young scientists, particularly those in isolated circumstances with no poultry science peers, to help further their careers via networking, collaborative research proposals, etc.

Objective S: Increase student membership in PSA by 15%, expand student participation in the PSA Hatchery by 25% and increase the number of schools represented in the Hatchery by employing the following strategies:

- ◇ Develop a sales or marketing brochure outlining well-defined selling points of being a PSA Hatchery member.
- ◇ Create an on-line quarterly Hatchery newsletter.
- ◇ Maintain a career section of the PSA website and link it to the FASS Job Resource and other head-hunter websites.
- ◇ Target members of student agricultural clubs that do not currently participate in Hatchery activities.
- ◇ Contact corresponding authors on journal papers to request they encourage their students to join the Hatchery.
- ◇ Recruit the graduate and undergraduate students that attend the Annual Meeting into the Hatchery.
- ◇ Build upon the Student Champions program to initiate a Student Ambassador Program.
- ◇ Create a PSA Hatchery Advisory Board to begin to plan and provide leadership for the development of the Hatchery over time.
- ◇ Establish fun and competitive activities between schools that capture the vision/mission of the Hatchery.
- ◇ Establish a quarterly PSA Hatchery newsletter to publicize Association and student activities and events.
- ◇ Initiate outreach to agricultural clubs at universities that do not currently participate in the Hatchery.
- ◇ Contact corresponding authors on papers submitted to PSA journals to ask them to encourage their graduate students to join the Hatchery.
- ◇ Consider contracting with one or two graduate students to provide staffing support to the Hatchery and nurture its growth and development.

New PSA Foundation Initiative Will Provide Opportunities for Students

In a report to the PSA Board of Directors (BOD) at their mid-year (January) meeting in Atlanta, PSA Foundation President Dr. Bill Saylor announced an ambitious new initiative aimed at supporting the next generation of poultry science and scientists. Funds raised in the project will likely be used to help provide financial and travel awards for PSA student members, and may also help support student research and other student-focused objectives.

Fueled by the success of the **Legacy Project** (which will digitize and index of all *Poultry Science* issues since 1906), the bold new fund-raising plan is set to have a \$1 million goal, with a portion of the funds endowed to ensure longevity of the project. The PSA BOD has already approved an initial \$20,000 donation to kick-off the effort.

When asked what role current PSA student members can play in making the project a success, Saylor suggested that "students can accompany Foundation representatives as they solicit donations. I'd also like to match student recipients with individual donors at meetings". For updates, be sure to visit the PSA website often and follow The Hatchery on Facebook.



For more information about the PSA Foundation and its programs, visit poultryscience.org/foundation.asp

The Hatchery is Growing!

Current PSA Hatchery members **:240**

24: Countries represented in the Hatchery

Universities represented in the Hatchery **:66**

29: US States represented in the Hatchery

Top Ten Universities

| | |
|---------------------------|----|
| 1. University of Arkansas | 22 |
| 2. University of Alberta | 11 |
| 3. Auburn University | 10 |
| NC State University | 10 |
| 5. UC-Davis | 9 |
| University of Georgia | 9 |
| 7. Purdue University | 8 |
| Virginia Tech | 8 |
| 9. Mississippi State | 7 |
| Texas A&M University | 7 |

When did our current members join PSA?



"A hen is only an egg's way of making another egg."

-Samuel Butler



PSA HATCHERY FACEBOOK REQUESTS



•Nguyen Dang Ngoc

"I want to use palm kernel meal (PKM) on Broiler growing diet but I don't know PKM constraint in this period. Could you please help me!"



•Muhannad Alrekabi

"Please can u help me about blood typing techniques in poultry I need u for my study please"



•Justin Doak

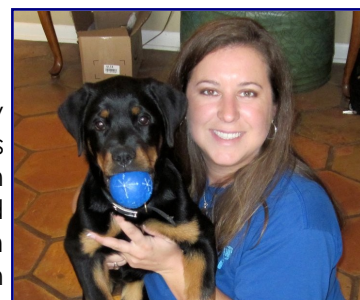
"I'm planning to start a small-scale organic poultry farm (egg production) in Texas. Would like to connect with a few poultry science grads that may be interested in helping start-up and manage this farm. Please contact me. Any other suggestions on outreach would be appreciated."



IF YOU HAVE INFORMATION FOR THESE QUESTIONS PLEASE LOG ONTO FACEBOOK "PSA HATCHERY" AND RESPOND TO THEM!

Meet your PSA Student Directors

JESSICA BUTLER



I received my bachelors from Texas A&M University in Poultry Science and my masters from Auburn University in Poultry Science. I am currently working on my PhD at Auburn in Poultry Science as well. My master's research focused on bioaerosols in the hang room of a poultry processing plant while my PhD research centers on poultry chillers and the potential to extend the water use in them. I am very active in the International Association for Food Protection, currently serving as vice-chair for the student group. I currently teach Poultry 2000 at Auburn University. My class focuses on judging live poultry and market products such as eggs and carcasses. This is my second year to serve the PSA Hatchery as a representative to the Board of Directors. I have thoroughly enjoyed my time at each annual meeting, seeing old friends and meeting new ones.

JAMES TYUS



I'm a 3rd-year PhD student in the Departments of Agricultural Sciences and Biological Sciences at Tennessee State University. In 2006, I received a MS in Animal Science, also from TSU. My Master's thesis work evaluated the

efficacy of bloodmeal as a protein source for growing layers. Turns out, when bloodmeal-based diets are supplemented with isoleucine, feeding them to young birds can lead to improved egg production performance later in life.

My current research centers on hypothalamic regulation of feeding, energy homeostasis and adiposity in broilers and guinea fowl. Using techniques of molecular biology, imaging and bioinformatics, I am comparatively analyzing key genes/proteins of the avian hypothalamus that are associated with feed utilization or fatness and that are responsive to intake of high-caloric diets.



**From the 2010
PSA Student
Luncheon
Denver, CO**



On the Agenda for the 2011 PSA Student Luncheon:

- Election of the new PSA Student Director
- Review of 2011-16 PSA Strategic Plan
- Student Ambassador Program
- Open Discussion on Hatchery Advisor Board

If you have questions or suggestions related to the 2011 Student Luncheon, just let us know:

psa@assochq.org



**POULTRY SCIENCE ASSOCIATION
HATCHERY**

2441 Village Green Place
Champaign, IL 61822
Tel: 217/356-5285
Fax: 217/398-4119
Email: psa@assochn.org

WEBSITE:

poultryscience.org/hatchery.asp

PSA STUDENT DIRECTORS

Jessica Butler, MS
Auburn University
butlej@auburn.edu

James Tyus, MS
Tennessee State University
jtyus@aplsglobal.org

PSA LEADERSHIP

Michael Lilburn
President

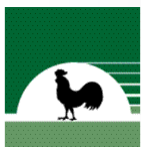
Michael Wineland
1st Vice President

Michael Kidd
2nd Vice President

James Kessler
Executive Director

Jon Cole
Assistant Executive Director

Robert Buresh
PSA Hatchery Board Liaison



2011 POULTRY SCIENCE ASSOCIATION ANNUAL MEETING

AMERICA'S CENTER & HYATT REGENCY AT THE ARCH
ST. LOUIS, MISSOURI
JULY 16-19, 2011

PSA HATCHERY WORKING LUNCHEON
SUNDAY, JULY 17

PSA HATCHERY GRADUATE STUDENT MIXER
SUNDAY, JULY 17

PSA/WPSA STUDENT MIXER
MONDAY, JULY 18

The PSA Mission Statement:

The Poultry Science Association (PSA) is a diverse global society dedicated to research and to dissemination and application of knowledge that supports an ethical and sustainable poultry food enterprise and enhances animal and human health and well-being.

The Objective of the PSA Hatchery:

The objective of PSA Hatchery is the educational, social, and academic/industrial advancement of its student members.

The Vision -- PSA in 10 to 15 years:

A pre-eminent global organization of poultry scientists and leaders in academia and industry firmly grounded in scientific endeavors related to poultry biology and the poultry enterprise. PSA's members are leaders in the production of animal protein and also in the arena of animal and human health and medicine.